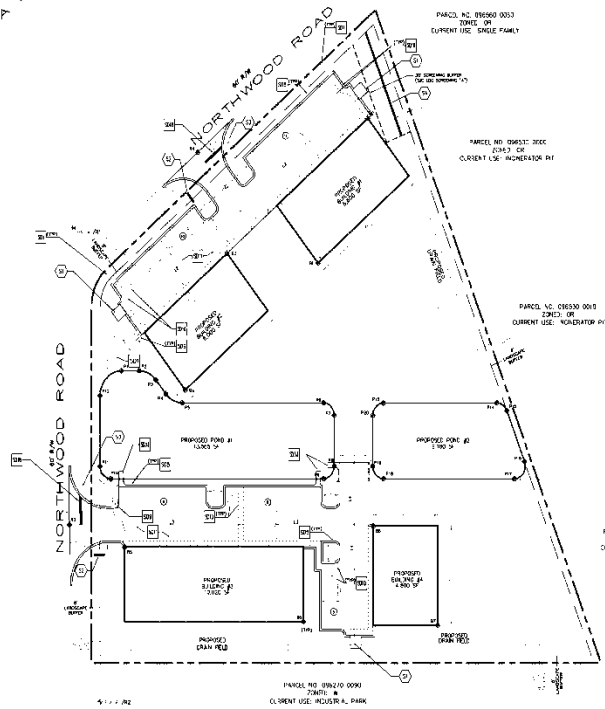


FLORIDA EAST COAST RAILWAY R/W
 66' 11"



ROADWAY CENTERLINE GEOMETRY									
LINE	DESCRIPTION	STATIONING	CHORD BEARS	CHORD LENGTH	DELTA	CHORD BEARS	CHORD LENGTH	DELTA	CHORD BEARS
1-1	S 38°32' 11"	86.16							
1-2	N 40° 41' 11"	273.67							
1-3	N 87°52' 27"	295.48							
1-4	S 10° 26' 27"	118.37							

CONTROL POINTS									
STATION	CHORD BEARS	CHORD LENGTH	DELTA	CHORD BEARS	CHORD LENGTH	DELTA	CHORD BEARS	CHORD LENGTH	DELTA
0+00	0.00	0.00	0.00	0.00	0.00	0.00	0.00	0.00	0.00
0+10	10.00	10.00	10.00	10.00	10.00	10.00	10.00	10.00	10.00
0+20	20.00	20.00	20.00	20.00	20.00	20.00	20.00	20.00	20.00
0+30	30.00	30.00	30.00	30.00	30.00	30.00	30.00	30.00	30.00
0+40	40.00	40.00	40.00	40.00	40.00	40.00	40.00	40.00	40.00
0+50	50.00	50.00	50.00	50.00	50.00	50.00	50.00	50.00	50.00
0+60	60.00	60.00	60.00	60.00	60.00	60.00	60.00	60.00	60.00
0+70	70.00	70.00	70.00	70.00	70.00	70.00	70.00	70.00	70.00
0+80	80.00	80.00	80.00	80.00	80.00	80.00	80.00	80.00	80.00
0+90	90.00	90.00	90.00	90.00	90.00	90.00	90.00	90.00	90.00
1+00	100.00	100.00	100.00	100.00	100.00	100.00	100.00	100.00	100.00

East Coast Wells and Pumps Services, Inc. St. Johns County, FL

Project Description:

Matthews Design Group, Inc. (MDG) completed engineering and site design for a proposed warehouse complex in St. Johns County, Florida. This development includes four (4) buildings totaling 27,000 sq.ft. Positioned on a 3.79 acre parcel. The design incorporated interconnected stormwater ponds to efficiently utilize the shape of the property. Efforts were taken to buffer this proposed industrial site from neighboring residential properties.

Project Manager: Rob A. Matthews III, P.E.

Project Status: Engineering and Design Complete / Construction Ongoing

Client: East Coast Wells and Pumps Services

MDG services provided:

- Site Design
- Stormwater Facilities Design
- Permitting with St. Johns County & SJRWMD



**MATTHEWS
 DESIGN GROUP**