



PROJECT PROFILE

» Key Project Elements

- Roadway design (1.4 miles)
- Stormwater facilities design
- Rezoning
- Conservation zone approval
- Dock boardwalk permitting
- Permitting with city of St. Augustine, FDEP, FDOT, and St. Johns River Water Management District

» Client

- AMC Delancy
- Hudson Capital Properties I, LP

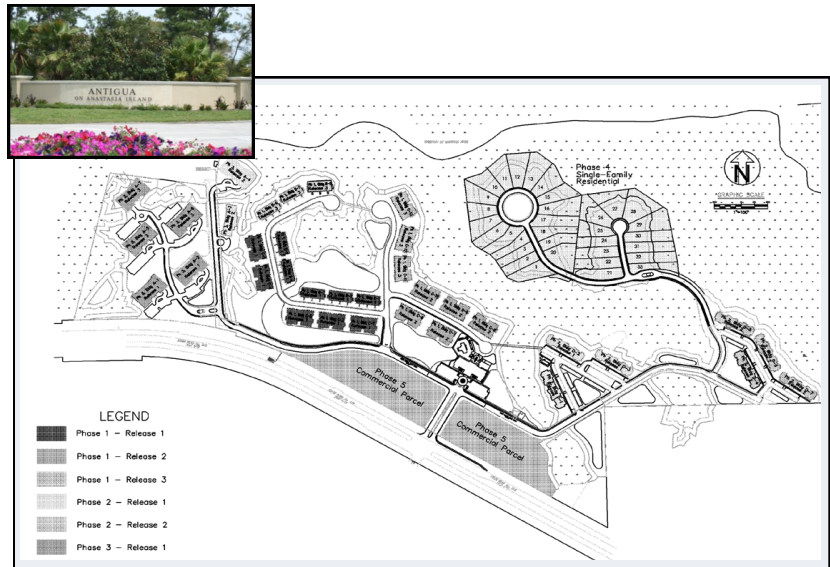
» MDG Manager

Scott A. Knowles, PE

» Status

Engineering and permitting completed 2008

ANTIGUA MULTIUSE CONDOMINIUMS, PERMITTING AND DESIGN ST. JOHNS COUNTY, FLORIDA



Future residents of the Antigua development will enjoy up-scale accommodations and scenic views of two historic St. Augustine landmarks.

Matthews Design Group (MDG) completed engineering, site design, and permitting for this proposed luxury waterfront community located along the Intracoastal Waterway on Anastasia Island in St. Augustine, Florida. Situated on 157 acres, this luxurious waterfront community will provide occupants views of the Bridge of Lions and the St. Augustine Lighthouse. The Antigua at St. Augustine will comprise 450 luxury waterfront residences and condominiums, as well as executive office suites and other commercial development along SR 312. The partially developed site currently features a roadway, and stormwater and utility infrastructure. Once modified, the site will facilitate the new development.